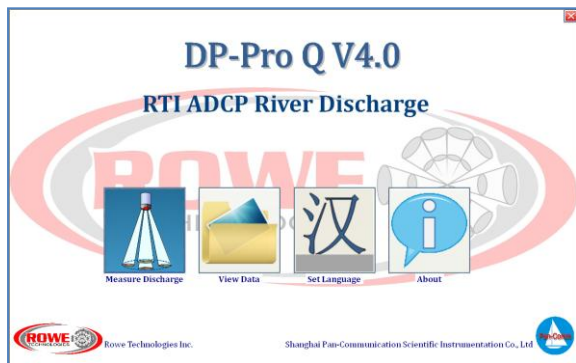


DP-Pro Q V4.0 Playback Quick Start

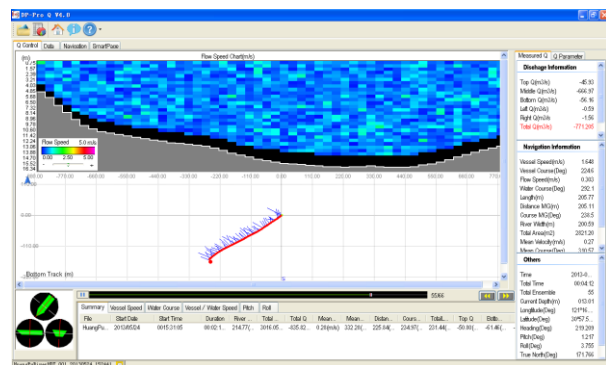
1. Playback Transect Data



Click the "View Data" button to playback the transect data.

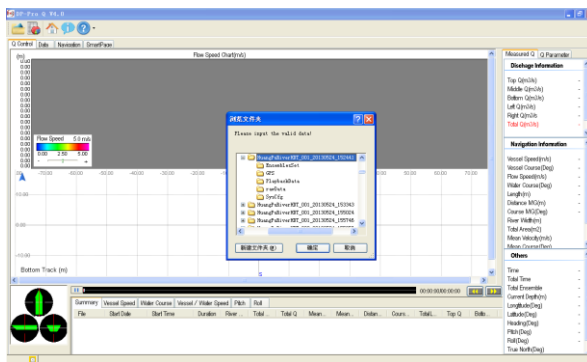
4. Display the Transect Data

Load the transect data and playback it automatically.




2. Main Interface

The play back main interface along with the "Browse Folder" dialog will appear after clicked the "View Data" button:



5. Load More Transect Data

Users can load more data clicking the  icon in the toolbar.


Users can switch the transect data by click the file name label on the bottom.



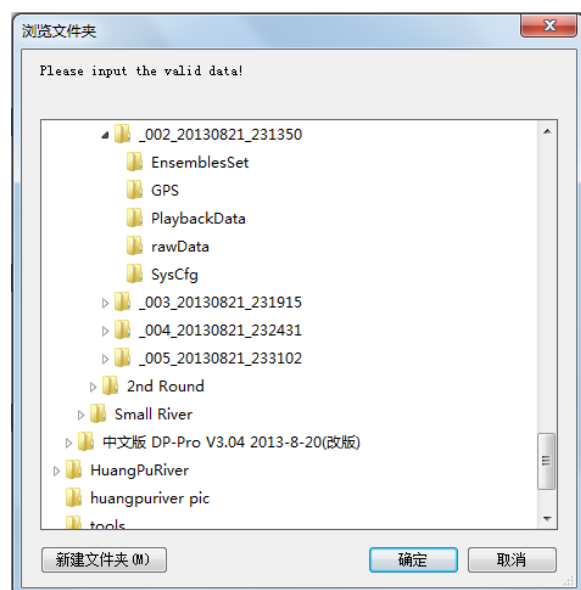
6. Summary

Click the "Summary" icon  in the toolbar, the summary form will appear:

File	Start Date	Start Time	Total...	River Wid...	Total...	Total...	Mean...	Mean...
002...	2013/08/21	0015:13:39	00:05...	63.24	187.51	120.38	0.64	235.86
003...	2013/08/21	0015:19:00	00:04...	62.90	186.45	123.24	0.66	234.93
004...	2013/08/21	0015:24:11	00:06...	63.21	186.59	122.78	0.65	233.90
005...	2013/08/21	0015:30:46	00:04...	62.16	185.71	122.20	0.66	235.29
			Mean	62.89	187.07	122.15	0.65	234.97
			StdDev	0.45	1.09	1.09	0.01	0.75
			Cov	0.01	0.01	0.01	0.01	0.00


Click the  icon to export the summary table.

3. Select Transect Data Folder



Select the "PlaybackData" folder under the project folder and Click "OK" to load the transect data.

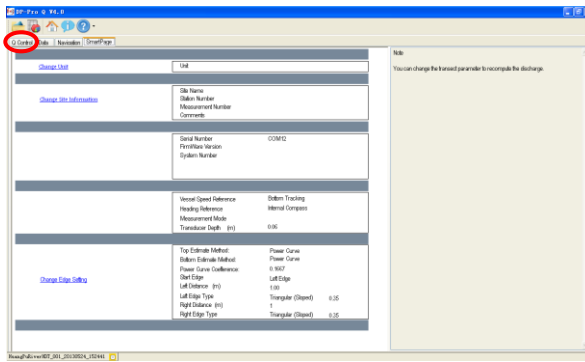
7. Print Summary

Click the  icon in the "Show Summary" toolbar and print the summary table.

DP-Pro Q V4.0 Playback Quick Start

8. View the Configuration

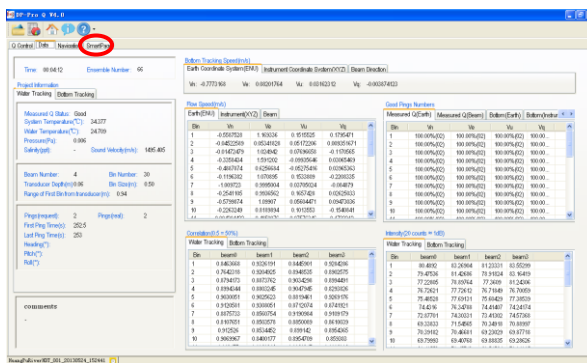
Click "SmartPage" page to check configuration



Users can change the Unit, Site Information and Edge.

9. View the Raw Data

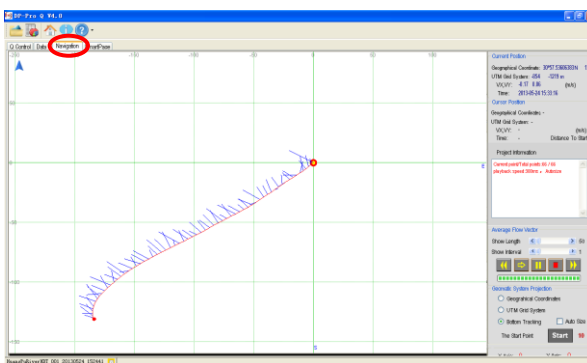
Click "Data" page to check out the raw data.



This page shows the raw data of each ensemble including but not limited to the profiling data, bottom tracking, echo intensity, correlation, etc.

10. View the Ship Track

Click "Navigation" page to check the ship track.



Users can zoom in/out the ship track by scroll the wheel button.

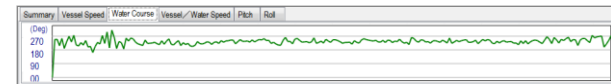
11. View additional chart

Click the page on the bottom of the "Q Control" to view the additional chart.

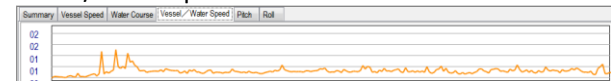
Vessel Speed



Water Course



Vessel/Water Speed ratio



Pitch

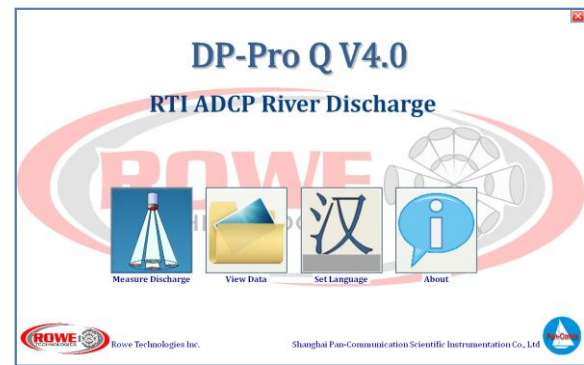


Roll



12. Back to the landing page

Click the home icon and back to the landing page:



Technical Support

For more DP-Pro Q software technical issues, please refer to the user manual or contact Shanghai Pan-Communication Scientific Instrumentation Co., Ltd.

Address: Suite 701, Building 11, Lane 518, Xinzhuan highway, shanghai China, 201612

Phone: +86 21 34060911

Fax: +86 21 57736883

Email: Info@pan-comm.com